

ESSS 2020 KAL/CAL Blanket – June Squares

All sizes given are based on the following (please adjust for gauge accordingly)

Yarn	Worsted Weight
Gauge	Knit - approx. 20 sts on US 8 = 4" Crochet - 14 sts on I or K hook = 4"
Completed Size of square	12" x 12"

Knit – Basic – Eyelets

NOTE - Suggest first 6-10 rows are worked straight garter stitch, and a couple of stitches each end of every row are worked as knit stitches to reduce curl but this is optional and are not included in this pattern description.

Cast on 60 sts

Row 1 WS row – Purl

Row 2 RS row – Purl

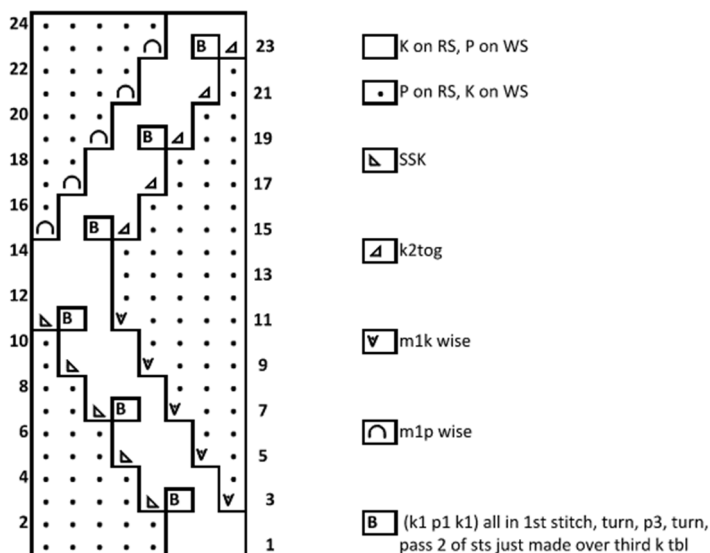
Row 3 WS row – Purl

Row 4 RS row – k1 *yo k2tog to end knit1

Repeat 4 rows until piece measures 12 inches

If you want to change it up try doing r1&2 in one color and r3&4 in a contrast color. Piece will lean as it has a bias, but this will disappear with blocking.

Knit – Advanced – Ornamental Wave



Cast on 62 stitches, work pattern per chart multiple times across row (3 stitches each side). Until piece measures 12 "

Crochet – Basic – Post stitches

Front Post double crochet (FPdc)

YO; insert hook from front to back to front around post of stitch below and draw up loop; (YO and draw through 2 loops) twice.

Pattern

R1 Chain 46, turn, DC in the 4th chain from hook. and in each remaining chain; ch1 and turn

R2 SC in each dc across; ch 3 (counts as first st of following row), turn

R3 * Work FPdc around post of next dc two rows below, dc in next sc; rep from * across to last sc, DC in last sc; ch1 turn

R4 SC in each dc across; ch 3 (counts as first st of following row), turn

R5 * Work FPdc around of post of next FPdc 2 rows below, DC in next sc; rep from * across, ending last rep with dc in last sc; ch1 turn

Repeat rows 2 – 5 until piece measures 12” square

Crochet – Advanced – Post to Post

Front Post double crochet (FPdc)

YO; insert hook from front to back to front around post of stitch below and draw up loop; (YO and draw through 2 loops) twice.

Back Post double crochet (BPdc)

YO; insert hook from back to front to back around post of stitch below and draw up loop; (YO and draw through 2 loops) twice.

Pattern - Chain multiple 2+1

R1 Chain 47, SC in second chain from hook and in each chain across; ch4 (counts as dc and ch1 sp) turn

R2 SK next sc, dc in next stitch; *ch1 sk next sc, DC in next sc; rep from *ch4 turn

R3 *FPdc around next dc, ch 1 BPdc around next dc ch1; rep from *across to turning ch dc in 3rd chain, ch4 turn

R4 *BPdc around next BPdc in previous row, ch1, FPdc around next FPdc in prev row, ch1 rep form * across to turning ch, dc in 3rd chain, ch4 turn

R5 * FPdc around next FPdc in prev row, ch1, BPdc around next BPdc in previous row, ch1 rep form * across to turning ch, dc in 3rd chain, ch4 turn

Repeat rows 4 and 5 until piece measures 12”