

ESSS 2020 KAL/CAL Blanket – March Squares

All sizes given are based on the following (please adjust for gauge accordingly)

Yarn	Worsted Weight
Gauge	Knit - approx. 20 sts on US 8 = 4" Crochet - 14 sts on I or K hook = 4"
Completed Size of square	12" x 12"

Knit – Basic – Box Stitch

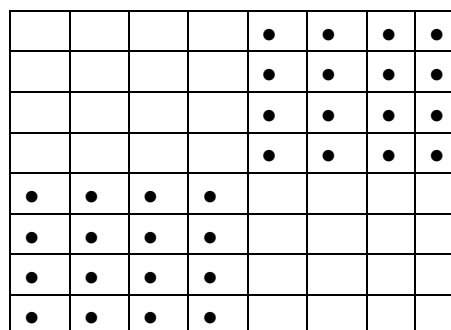
NOTE - Suggest first 6-10 rows are worked straight garter stitch, and a couple of stitches each end of every row are worked as knit stitches to reduce curl but this is optional and are not included in this pattern description.

Cast on 60 sts

Knit 4 purl 4 repeat

Repeat chart until work measures 12" square.

Cast off all stitches



Knit – Advanced – Open Zig Zag

Note – as per stitch

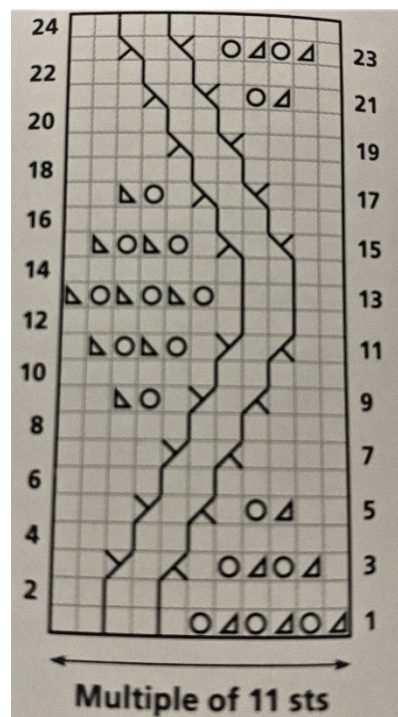
With Main Color Cast on 60 sts (i.e. enough for 12" for your gauge)

Work pattern across 11 stitches (this can be one or multiple repeats

Depending on stitch count – Your choice) starting at row 1

Repeat 24 row pattern until 12" are complete

Pattern stitch from Essential Stitch collection page 56



Crochet – Basic – Treble crochet

Chain 46, turn, skipping the first 4 chains TC 42 sts, (tC = yarn over twice on hook, insert hook YO pull through, YO pull through 2, YO pull through 2, YO pull through 2)

Turn chain 4 (counts as first treble crochet) and work 41 TC to end. Repeat until piece measures 12” square.

Crochet – Advanced – Three Cheers

Three colors needed for this pattern (can use only 2 or more than 3 your choice)

Multiple of any uneven number (work sufficient chains to have 12” square i.e. 43ch)

Repeat –

Row 1 – SC into 2nd chain from hook SC to end, turn

Row 2 – Ch3 (counts as DC), *SK next sc, dc in next sc, dc in skipped sc, rep from * to last stitch, dc in last sc changing color, turn

Row 3 – Ch 1, sc in each dc to end of row turn.

Rep rows 2 and 3 for pattern, 2 rows in each color and ending with a row 2. Until piece measures 12”