

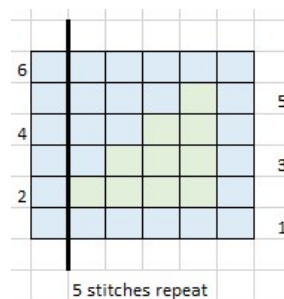
# ESSS 2020 KAL/CAL Blanket – Nov Squares

## ***Knit – Basic – Diagonal triangles*** (2 contrasting colors)

NOTE - Suggest first 6-10 rows are worked straight garter stitch, and a couple of stitches each end of every row are worked as knit stitches to reduce curl but this is optional and are not included in this pattern description.

Cast on 62 sts first and last 3 stitches are garter stitch every row.

Follow the 5 row chart in the middle 56 stitches (11 times) plus 1 plain stitch at end



Repeat chart until work measures 12" square.

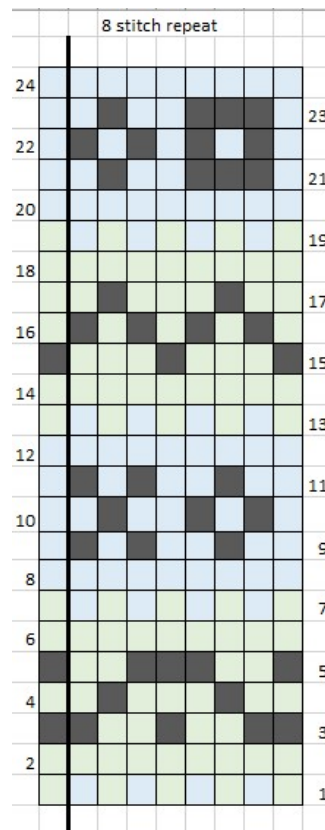
Cast off all stitches

## ***Knit – Advanced – Peerie Patterns*** (3 colors)

Made by working 3 colors according to pattern, edges can be main color or chart color, your choice.

Multiple of 8+1 – so cast on 63 stitches

*Pattern stitch from Essential Stitch collection page 137*



## ***Crochet – Basic – Flowerpot***

Chain 43 or enough to get 12" square (pattern repeat is 3+2)

Stitch guide – SHELL – (dc, ch1 dc) all in same ch or ch.sp.

Row 1 – Dc in 5<sup>th</sup> ch from hook; \*sk next 2 chs shell in next ch; rep from \* across row; ch 3 turn.

Row 2 – 2dc in first ch-1 space, 3dc in each remaining ch-1 space, ch1 turn

Row 3 – sc in each of the first 2 dc; \*ch3 sk next 2dc, sc in next dc; rep from\* across to last st, sc in turning ch; ch1 turn

Row 4 – SC in first sc, ch 3; \* sc in next ch03 sp, ch 3 ; rep from \* across to last 2sc, sk next sc, sc in last sc; ch 4 turn

Row 5 – DC in first ch-3 sp, shell in each rem ch-3 sp; ch 3 turn.

Rep rows 2 – 5 until piece measures 12"

## ***Crochet – Advanced – Interlacements (3 colors)***

Chain multiple 4+2

Three colors – listed as A, B and C in pattern

Work ch ch with color A (Chain enough for 12" square)

Row 1 – With color A work 3 dc in 6<sup>th</sup> chain from hook; \* ch 1, sk 3 chs, 3 dc in next ch; rep from \* across ending last rep with 2 dc (instead of 3) in last ch, changing to color B in last st; with color B ch2 turn

Row 2 – \* With color B, dc in next ch1 sp, tr in skipped ch in row 1, dc in same ch-1 sp, ch1 rep from \* across, ending last rep with 2 dc in top of beg skipped chs, changing to color C ch2 turn

Row 3 \* with color C, dc in next ch1 sp, tr in skipped st in row below, dc in same ch-1 sp, ch-1 ; rep from \* across ending last rep with 2 dc in top of turning ch; changing to color A in last st; with color A ch2 turn.

Rep row 3 for pattern alternating color rows of color A, color B and color C.